



Take Off



21st
Century
Skills

#Information Literacy

Write 'R' for real and 'A' for artificial.



R



A



R

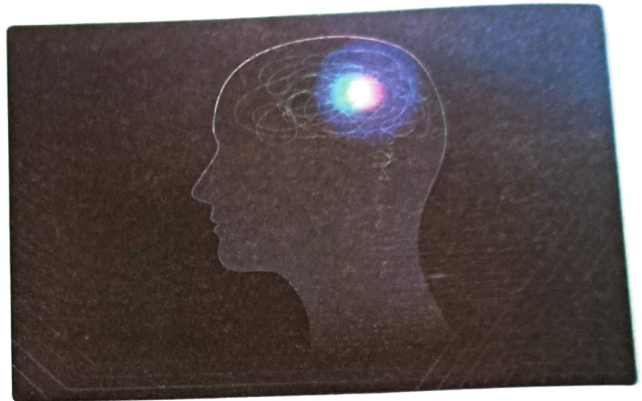
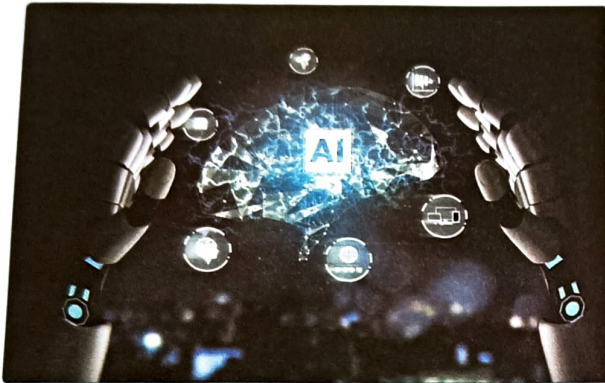


R



A

Artificial intelligence (AI) is the ability of a computer or a machine to think, learn and act like human brain.



ARTIFICIALLY INTELLIGENT MACHINES

For a machine to be artificially intelligent, it must be able to:

1. solve tasks and take decisions
2. understand and express human language
3. recognise images



...RDLU was one of the first AI programs to understand natural language.

AI AROUND US

...makes our life easier. Let us look at artificial intelligence that we see around us.

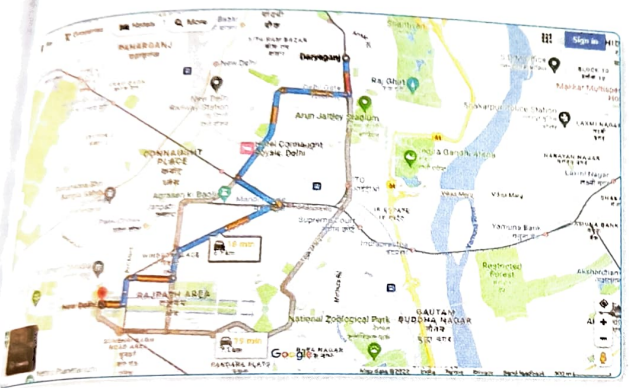
Voice Assistant

Voice Assistant is an AI technology that can understand human commands. Some examples of voice assistants are Google assistant, Alexa and Siri.



Face Detection

Face detection is an AI technology which is used in filters on our faces while taking pictures and for unlocking our phone, for example, Snapchat.



Navigation

Navigation apps use AI to identify changes in traffic flow and recommend the best route, for example, Google Maps.



Double Tap

Guess my name.

1. I am the ability of a computer or a machine to think, learn and act like human brain.
2. I use AI to identify changes in traffic flow and recommend the best route.
3. I am an AI technology that can understand human commands.



#Critical Thinking



Artificial Intelligence

Navigation
Voice Assistant

- Voice assistants are AI-enabled software that can understand human commands and execute them.
- Face detection is an AI technology used for variety of purposes.
- Navigation apps use AI to identify changes in traffic flow and recommend the best route.
- Robots are automatically operated machines that work in place of humans.

Choose the correct option.

- Which of the following is not related to voice assistants?
 - a. Google Maps
 - b. Siri
 - c. Cortana
 - d. Google Assistant
- Which of the following is not a task associated with a robot?
 - a. Packing
 - b. Lifting
 - c. Bathing
 - d. Serving Food
- Which of the following is the ability of an intelligent machine?
 - a. Think
 - b. Eat
 - c. Sleep
 - d. Drink

Fill in the blanks with the correct words.

Hints ¹ Understand, ³ Face, ⁴ Easier, ² Voice assistant

- An artificially intelligent machine can understand human language.
- Siri is an example of voice assistant.
- face detection is a very popular feature of smartphones.
- AI makes our life easier.



Scratch Your Brain.



#Critical Thinking
#Technology Literacy

1. Rearrange the letters to get meaningful words

a. TOORB

R O B O T

b. LGOGOE

G O O G L E

c. IRSI

S I R I

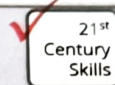
2. Find out about two robots. Write about them in your notebook. Paste their pictures

GO Online

Scan the QR Code and create fun animations in real-time with your camera.



DIY In The Lab



#Creativity
#Technology Literacy

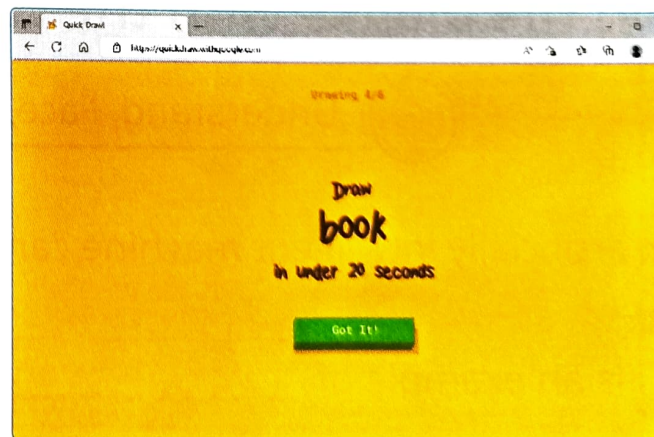
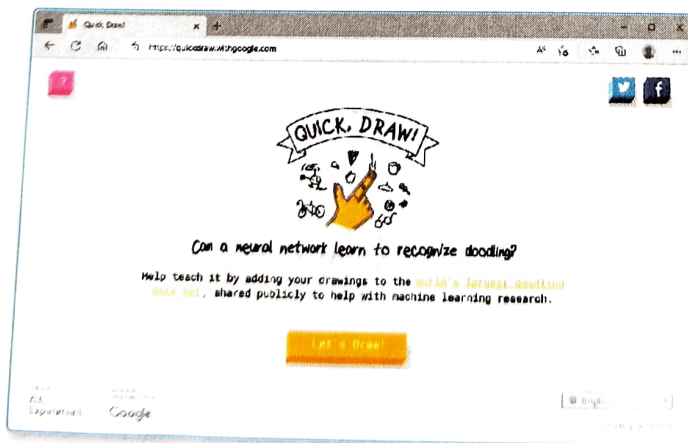
To

Subject AI Drawing

Quick, Draw! is a program to draw images on a computer. It uses AI to identify the images drawn.

With the help of your teacher, draw the images as asked by the program. You will have 20 seconds each to draw six things. Books, basketball, mushrooms, fire hydrants, ambulance, and the ocean are few examples.

1. Launch Microsoft Edge from the Start menu.
2. Type <https://quickdraw.withgoogle.com/> in the address bar.
3. Click on Let's Draw! to start drawing the images.



For The Teacher

- Demonstrate the uses of various AI-enabled devices to the students.